

DECORATIVE



M1 - B1
Class 1 - Pass



GREENGUARD



MATTIZ IGNIS



BANDALUX

BANDALUX

MATTIZ IGNIS

ESTILO, CONFORT Y EFICIENCIA

- Dispone de una amplia gama cromática para una perfecta integración en la estética de cada proyecto.
- Tejido oscurente hasta 10.000 lux.
- Libre de halógeno, libre de antimonio y otras sustancias nocivas para la salud y el medio ambiente (Reach Compliant).
- Absorción acústica: $\alpha_w=0,30$.
- Eficiencia visual y térmica para un óptimo confort.
- Contribuye a la obtención de certificados de edificación sostenible Breeam.

STYLE, CONFORT ET EFFICACITÉ

- Dispose d'une large palette de coloris pour une intégration parfaite au style de chaque projet.
- Tissu occultant jusqu'à 10000 lux.
- Sans halogène ni autres substances nocives pour la santé et l'environnement (Reach Compliant).
- Absorption acoustique : $\alpha_w = 0.30$.
- Efficacité visuelle et thermique pour un confort optimal.
- Contribue à l'obtention de certifications de la construction durable Breeam.

STYLE, COMFORT AND EFFICIENCY

- Offers a wide range of colors, to fit in perfectly with the aesthetics of each and every project.
- Blackout fabric, blocking up to 10,000 lux ■ Free of halogens and other toxic substances (Reach Compliant).
- Acoustic absorption: $\alpha_w=0,30$.
- Visual and thermal efficiency, for optimal comfort.
- Contributes to Breeam sustainable construction certifications.

STILE, CONFORT ED EFFICIENZA

- Dispone di una vasta gamma cromatica per una perfetta integrazione nell'estetica di ogni progetto.
- Tessuto oscurente fino a 10.000 lux.
- Privo di alogeni e altre sostanze nocive per la salute e l'ambiente (Reach Compliant).
- Assorbimento acustico: $\alpha_w=0,30$.
- Efficienza visiva e termica per un comfort ottimale.
- Contribuisce al conseguimento di certificati di edilizia sostenibile Breeam.

PROPERTIES



MAINTENANCE



CERTIFICATES

FABRICS CERTIFICATES



COMPANY & SYSTEMS CERTIFICATES



Contributing to Ecofriendly Building

Suitable for HP Latex

BREEAM®

Certified for
HP Latex Inks

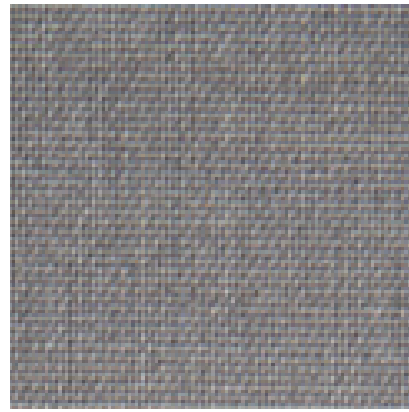
FIND MORE AT — contract.bandalux.com



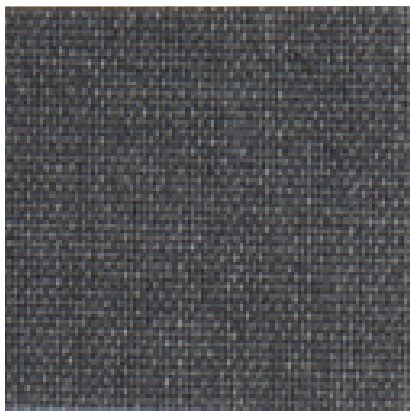
Snow
Ref. 56003



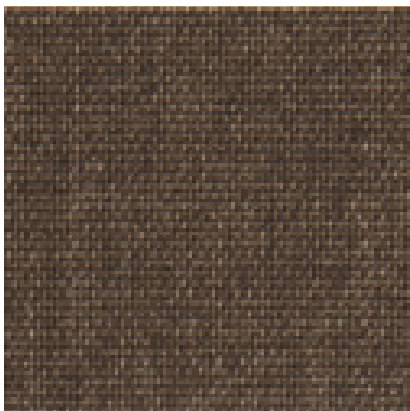
Dove
Ref. 56010



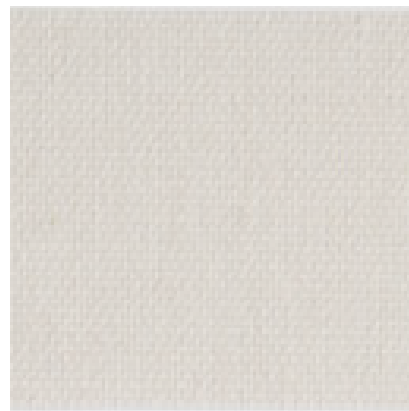
Smoke
Ref. 56004



Iron
Ref. 56005



Chocolate
Ref. 56009



Linen
Ref. 56035



Cinder
Ref. 56036



Pebble
Ref. 56037



Mint
Ref. 56050



Cyclamen
Ref. 56053



Royal Blue*
Ref. 56028



Navy
Ref. 56007



Bright Citreous
Ref. 56051



Coral
Ref. 56054



Cordovan
Ref. 56023



Lima
Ref. 56031



Light Blue
Ref. 56055



Paprika
Ref. 56024

OF 0%

MATTIZ IGNIS

TECHNICAL DATA

Composición / Composition Composition / Composizione	-	100% PES
Peso / Poids / Weight / Peso	EN 12127	210 g/m ² - 6,19 oz/yd ²
Espesor / Épaisseur / Thickness / Spessore	EN ISO 5084	0,36 mm - 0,014"
Ancho de rollo / Largeur rouleau Roll width / Larghezza del tessuto	-	250 cm - 98" *Cordovan, Paprika, Royal Blue 200 cm - 78"
Grado de apertura / Coefficient d'ouverture Openess Factor / Grado di apertura (%)	-	0%
Absorción acústica / Absorption acoustique Sound absorption / Assorbimento acustico	EN ISO 10534:2	$\alpha_w=0,30$
Resistencia al fuego / Classement feu Fire classification / Resistenza al fuoco	NF P 92 503	M1
	DIN 4102	B1
	EN 13773	Class 1
	NFPA 701	Pass
Resistencia a la luz / Résistance à la lumière Light Fastness / Resistenza alla luce (Blue Scale)	ISO 105 B02	6 - 7 / 8 Snow 4 - 5/ 8

THERMAL FACTORS

OPTICAL FACTORS

Ref.	Colors	% Ts	% Rs	% As	EN410 - EN14500 - EN14501								Glare Control Class	Night Privacy Class	Visual Contact Class	Daylight Utilisation Class
					EN52022-1 (Standard C and D)				% Tv	% Rv	% Tv,n-n	% Tv,n-diff				
					Gtot int Glazing C		Gtot int Glazing D									
					Gtot	CLASS	Gtot	CLASS								
56051	Bright Citreous	31	48	21	0,38	1	0,25	2	32	54	0	32	2	2	0	3
56009	Chocolate	4	13	83	0,47	1	0,27	2	1	10	0	1	4	4	0	0
56036	Cinder	4	13	29	0,39	1	0,25	2	19	41	0	19	2	2	0	2
56054	Coral	27	44	29	0,39	1	0,25	2	15	34	0	15	2	3	0	2
56023	Cordovan*	18	31	51	0,43	1	0,26	2	0,2	6	0	0,2	4	4	0	0
56053	Cyclamen	30	45	25	0,39	1	0,25	2	16	33	0	16	2	2	0	2
56010	Dove	29	48	23	0,38	1	0,25	2	27	52	0	27	2	2	0	2
56005	Iron	5	17	78	0,46	1	0,27	2	2	14	0	2	4	4	0	0
56055	Light Blue	29	44	27	0,39	1	0,25	2	19	38	0	19	2	2	0	2
56052	Lima	24	44	32	0,39	1	0,25	2	18	43	0	18	2	2	0	2
56035	Linen	27	61	12	0,38	1	0,14*	3*	24	61	0,3	23,8	1	2	0	3
56050	Mint	30	48	22	0,38	1	0,25	2	26	51	0	26	2	2	0	2
56007	Navy	5	13	82	0,47	1	0,27	2	0,3	7	0	0,3	4	4	0	0
56024	Paprika*	20	36	44	0,45	1	0,26	2	3	13	0	3	3	4	0	0
56037	Pebble	18	33	49	0,46	1	0,28	2	13	33	0	13	3	3	0	2
56028	Royal Blue*	10	28	62	0,43	1	0,26	2	2	15	0	2	4	4	0	0
56004	Smoke	17	31	52	0,43	1	0,26	2	9	26	0	9	2	3	0	1
56003	Snow	31	62	7	0,37	1	0,16*	2*	30	67	0	30	0	2	0	3

*EN52022-3 type "D" Glazing

The technical data above are average values with a +/- 5% tolerance. The values quoted above represent results of standards and internal tests performed and are provided for information only to enable to make the best use of our products. To ensure warranty effectiveness, refer to warranty certificate concerned available on demand. Our products are subjects to technical evolutions, we remain entitled to modify the characteristics of our products at any time. The buyer of our products is responsible for checking the validity of the above data.